

PROGRAMMING CLASSIFIER SYSTEMS IN DSPROLOG

Tutorial

by

Sebastian Hübner


Version 0.0.1, May 2007

Chapter 1


The DSPROLOG IDE

1.1 Project Management

1.1.1 How to create a project?

1.  Click the 'Create Project' button.
2. The 'Create Project' dialog window (see figure 1.1) shows up.
3. Enter the name of the project.
4. Select paths for the project itself, for the default audio directory and for the default export directory.
5. Click the 'OK' button. The project is written into a separate folder containing a project file (ProjectName.dsp) and a number of subfolders for different types of objects and datasets. Automatically created subfolders are 'Visual Objects', 'FL-Classifiers', 'SL-Classifiers', 'FL-Facts', 'SL-Facts' and 'Profiles' (for user defined profiles). Initially, all folders except the 'Profiles' folder are empty. While working, the different types of objects are saved in their specific folders by default. All files may be organized manually into hierarchies by making use of a file manager.

1.1.2 How to open a project?

1.  Click the 'Open Project' button.
2. A file open dialog window shows up.
3. Select a DSProlog project file (.dsp) in an existing project folder.
4. Open the project by double clicking the project file or clicking the 'OK' button.

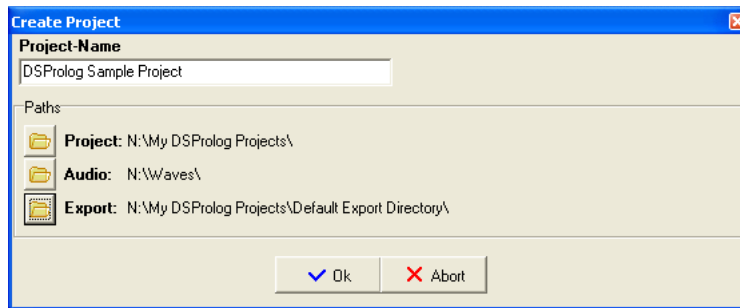


Figure 1.1: Create a new project

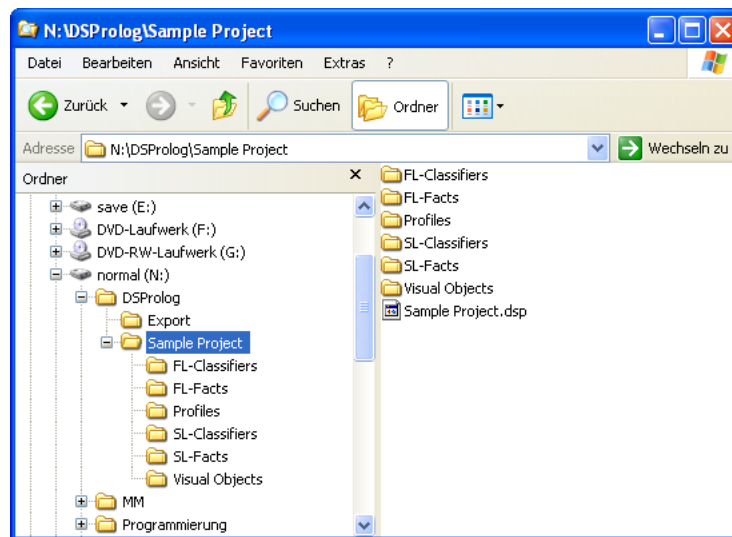




Figure 1.2: Structure of a project

1.1.3 How to modify project settings?


1.  Click the 'Project Settings' button. Options are the default paths for audio files and export data.
2. The 'Create Project' dialog window shows up.
3. Select a DSProlog project file (.dsp) in an existing project folder.
4. Open the project by double clicking the project file or clicking the 'OK' button.

1.1.4 Other project management operations?


1.  Click the 'Close project' button to close all project specific files and database connections.
2. Move a DSProlog project by moving the entire project folder.
3. Delete a DSProlog project by deleting the entire project folder.
4. Rename a DSProlog project by renaming project folder and project file.

1.2 IDE Settings


1.2.1 How to change the appearance of export graphs?

1.  Click the 'IDE Settings' button.
2. The 'IDE Settings' window shows up.
3. Select the tab 'Export Graphs'.
4. Option 'Additional Figures': Additional figures that are shown on top of export graphs.
5. Option 'Resolution': Resolution in pixels of export graphs.
6. Click the 'OK' button.


1.2.2 How to change audio settings?

1.  Click the 'IDE Settings' button.
2. The 'IDE Settings' window shows up.
3. Select the tab 'Audio'.
4. Option 'FIR-Window': Window function that applies to all filter operations;
5. Option 'DAT-File Settings': Settings for reading .dat files;
6. Option 'Windows Audio Settings': Click to open the Windows audio settings menu.
7. Click the 'OK' button.

1.2.3 How to change the appearance of FL signatures?

1.  Click the 'IDE Settings' button.
2. The 'IDE Settings' window shows up.
3. Select the tab 'FL signatures'.
4. Option 'Phi+': Show/hide elements of ϕ^+ ;
5. Option 'Phi-': Show/hide elements of ϕ^- ;
6. Option 'Phi0': Show/hide elements of ϕ^0 ;
7. Click the 'OK' button.

1.2.4 How to change general IDE options?

1.  Click the 'IDE Settings' button.
2. The 'IDE Settings' window shows up.
3. Select the tab 'General'.
4. Option 'Click open': All objects are opened by single mouse click;
5. Option 'Apply VO settings to SLC': Apply time-frequency-settings of the current VO when opening a SLC.
6. Click the 'OK' button.