



Celebrating 30 years of integrated climate impact research at the Potsdam Institute.

Relationship between atmospheric rivers and landslides in western North America

Sara M. Vallejo-Bernal
(vallejo.bernal@pik-potsdam.de)

Frederik Wolf, Lisa Luna, Norbert Marwan,
Niklas Boers and Jürgen Kurths

Potsdam Institute for Climate Impact Research



Illustration: NOAA and Los Angeles Times



San Francisco
Los Angeles

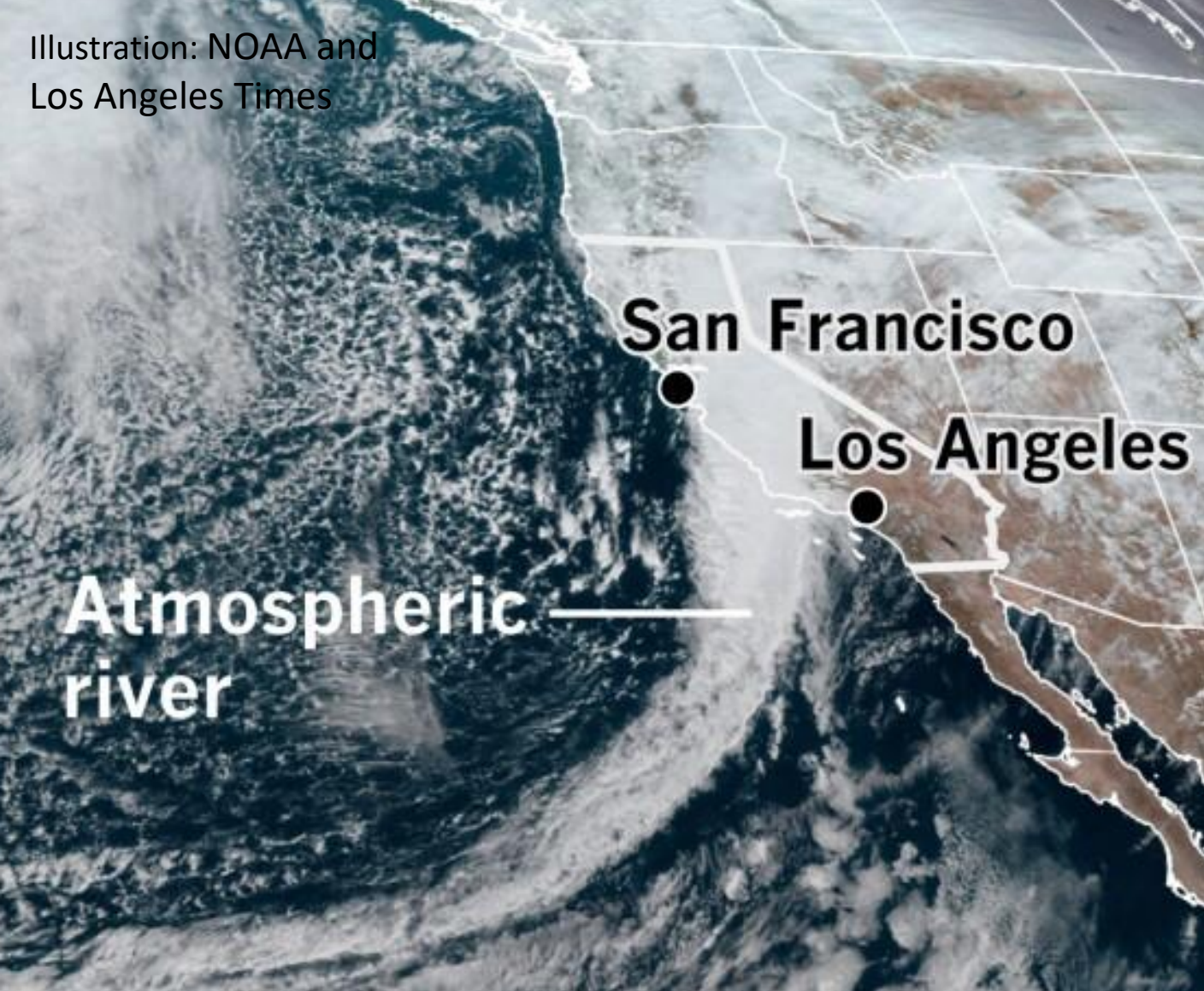
**Atmospheric
river**

Photo: Washington State Department of Transportation



Sharing not permitted

Illustration: NOAA and Los Angeles Times



San Francisco
Los Angeles

Atmospheric river

Photo: Washington State Department of Transportation



Are ARs and landslides related?

Are ARs and landslides related?

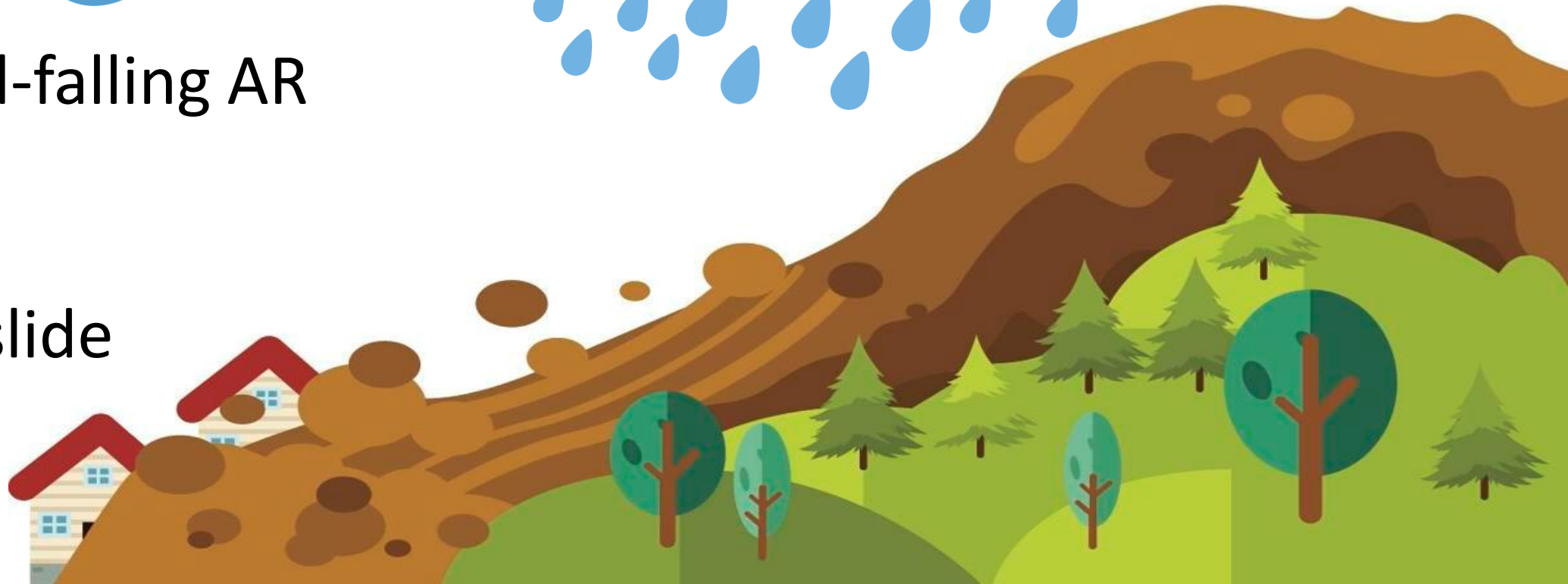


1. Land-falling AR



2. Rainfall

3. Landslide

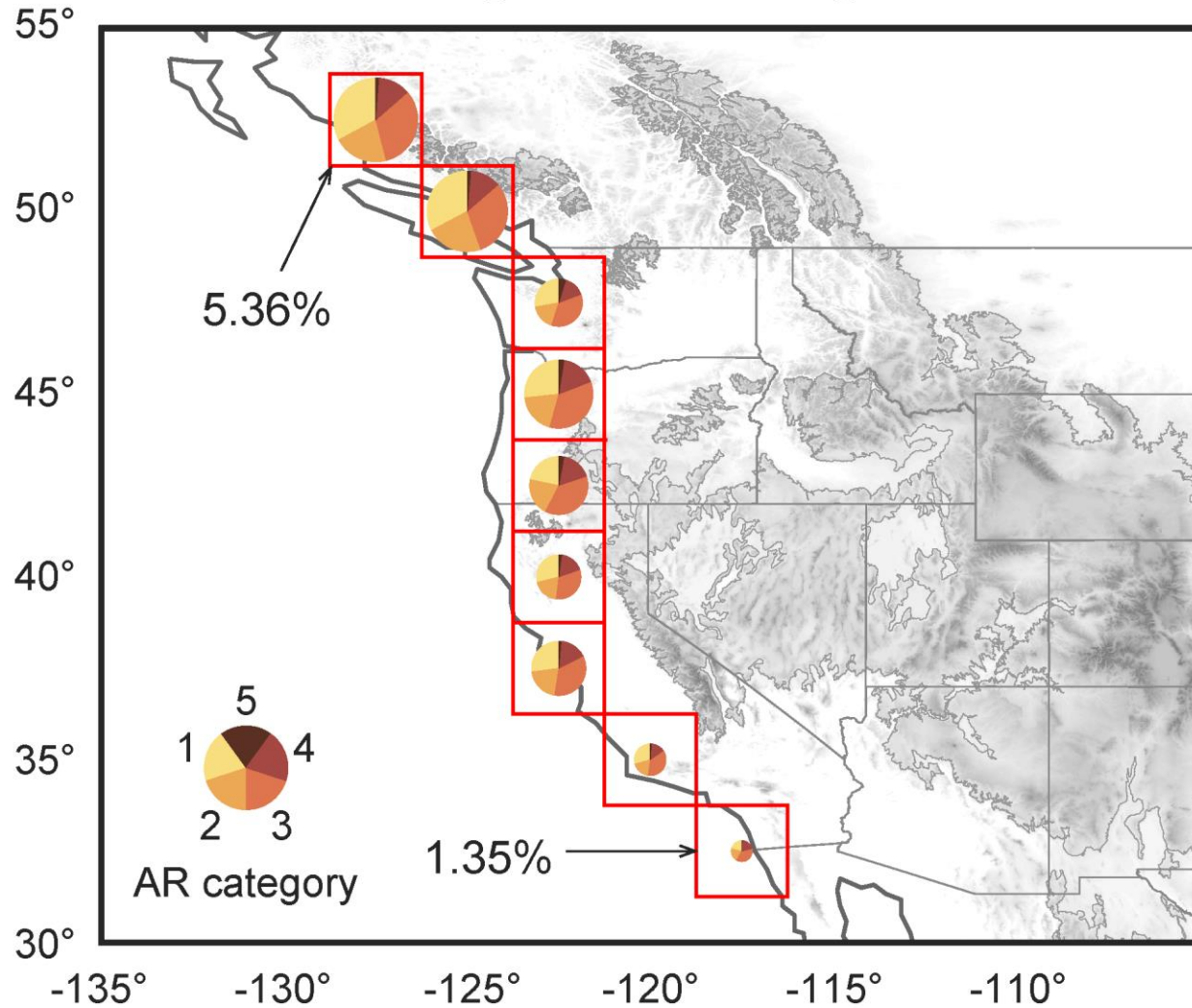


Data

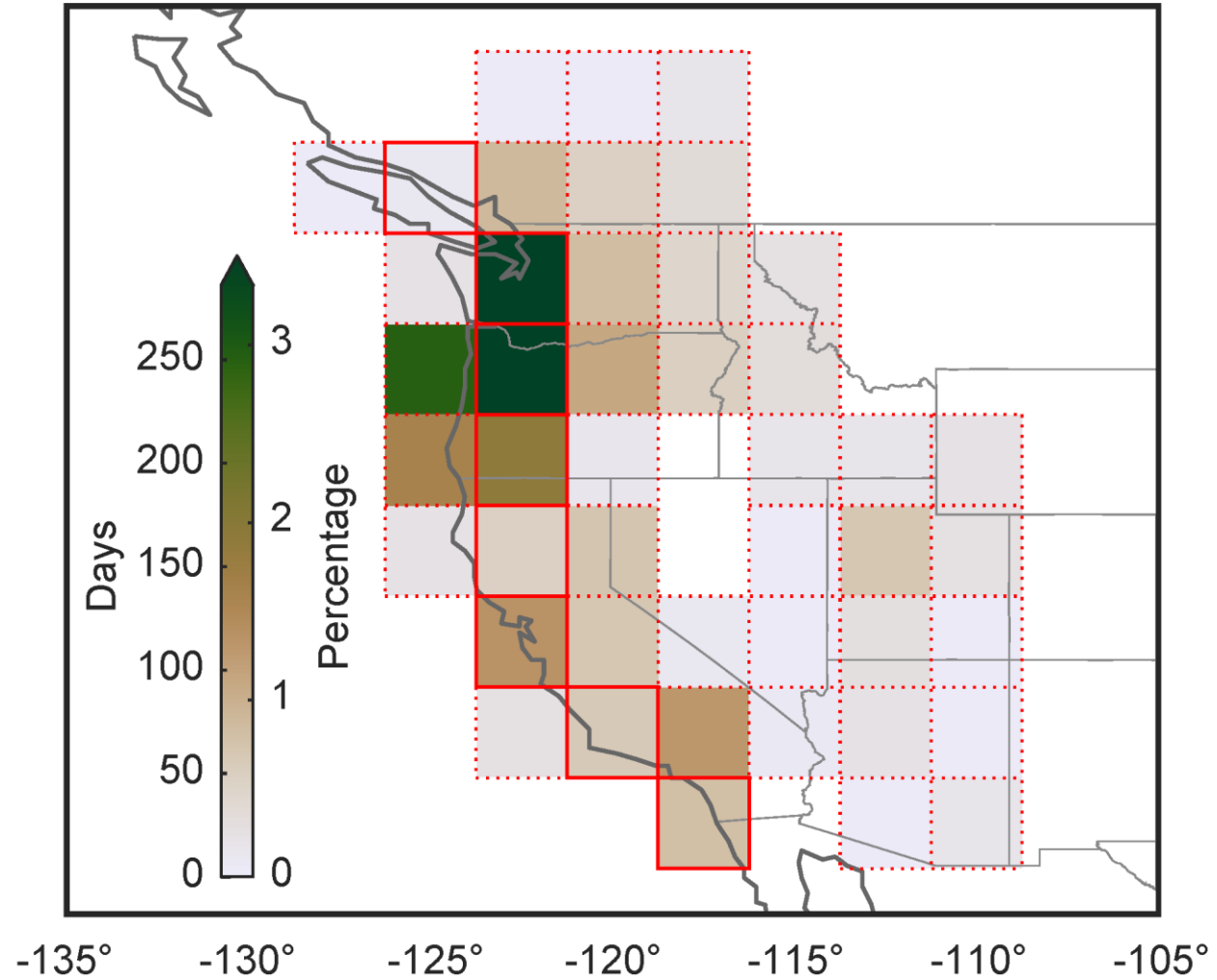
Daily precipitation estimates



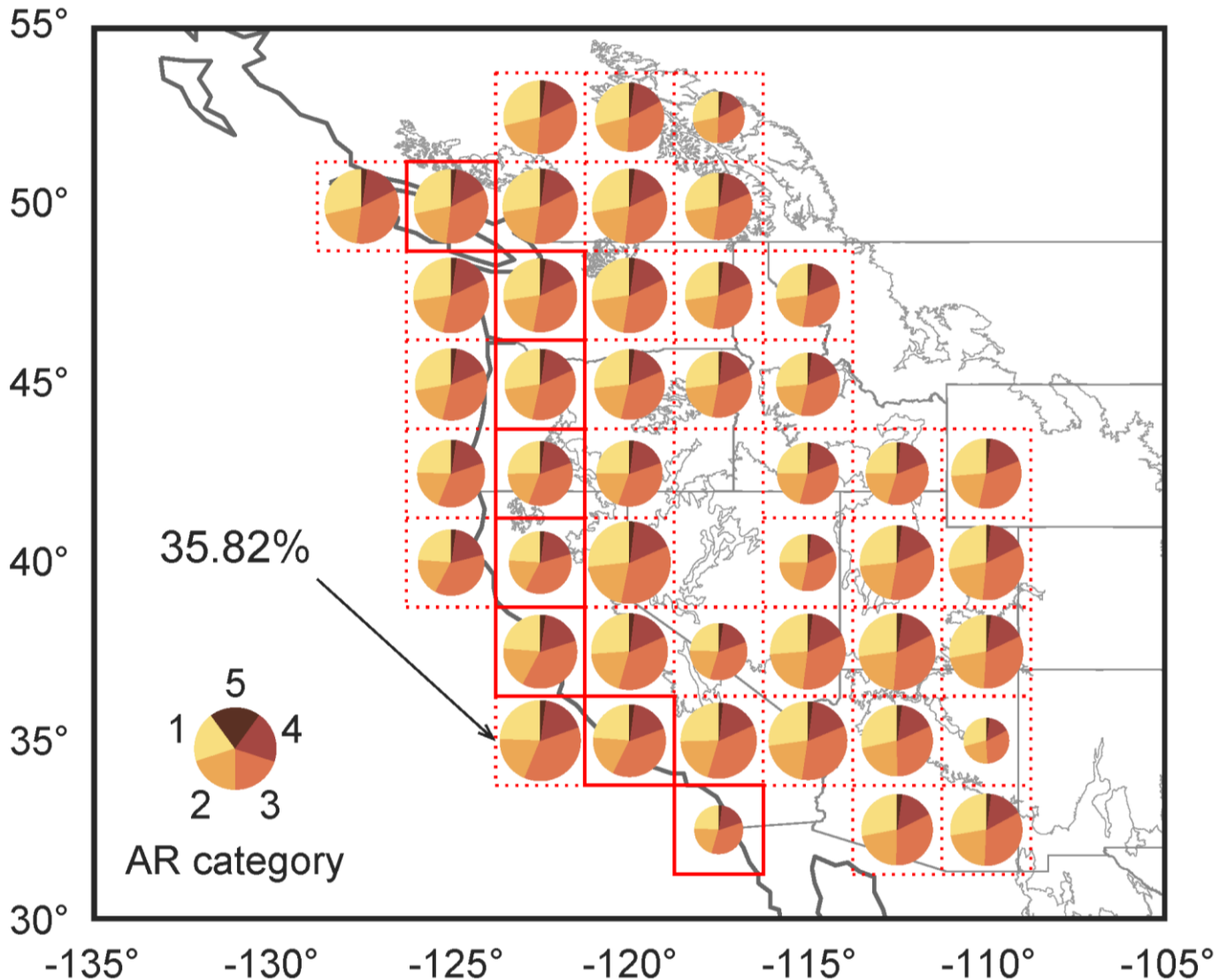
Catalog of land-falling ARs



Landslide inventory (1996-2018)



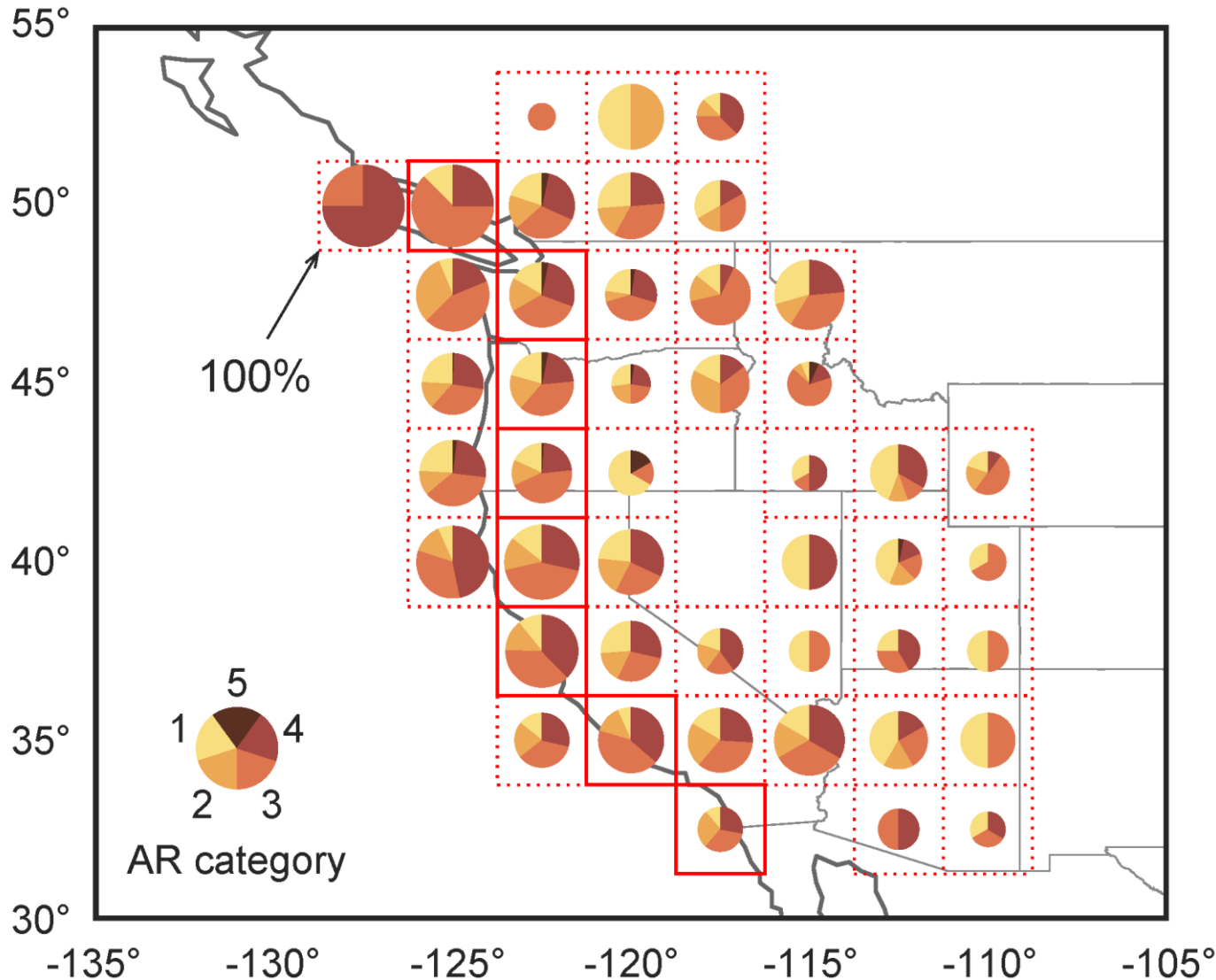
Attributing rainfall to ARs



- Probabilistic attribution model
- Diameter: fraction of wet days attributed to a land-falling AR
- Slice size: contribution of each AR category

About 30% of the wet days can be attributed to a land-falling atmospheric river

Attributing landslides to rainfall



- Precedence relation
- Diameter: fraction of landslides preceded by AR-attributed rainfall
- Slice size: contribution of each AR category

Intense atmospheric rivers trigger the majority of landslides in western North America



Celebrating 30 years of
integrated climate impact research
at the Potsdam Institute.

Can we use ARs to predict landslides?

Sara M. Vallejo-Bernal
vallejo.bernal@pik-potsdam.de

